

## *Bavaria 37 HIGHLINE*

NEW SPECIAL EDITION HIGHLINE AND HIGHLINE Avantgarde are available both for the 37 Sport and 37 Sport HT

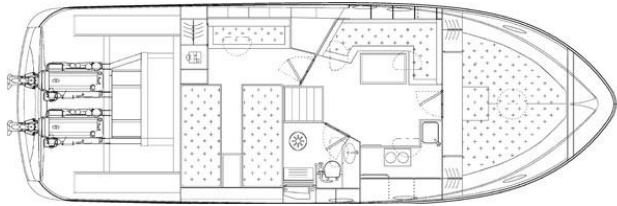
The version HIGHLINE lets you choose among four different colours for the interior upholstery while the cockpit upholstery is always white and the hull stripe is blue.

The version HIGHLINE Avantgarde offers the additional wood colours walnut and light oak beside mahogany and several colours for the cockpit upholstery and matching decoration stripes on the hull to select from.

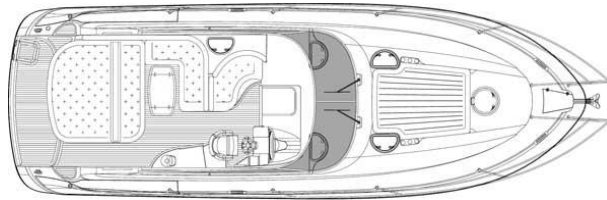
At the same time the HIGHLINE Avantgarde version has four optional fabrics for the interior upholstery available

The image shows the version HIGHLINE Avantgarde announced wood colour look represents a coloured style surface that may not be made of real wood.

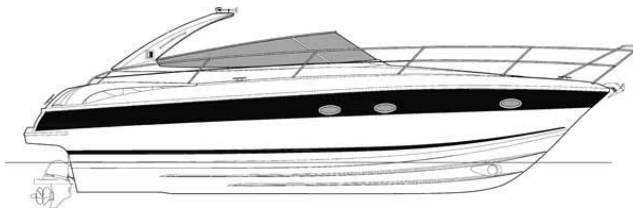
# Technical Details & Layouts



Internal Layout



Deck Layout



Length Overall	11.95m
Length Hull	11.77m
Beam overall	3.99m
Height above waterline	approx 3.07m
Height in Cabin	approx 1.90m
Draught, outdrive lowered	approx 0.95m
Draught, outdrive raised	approx 0.75m
Cabins	2
Berths	4
Unladen weight (inc engine)	from approx 8500kg
Fuel Tank	approx. 720ltrs
Water Tank	approx. 250ltrs
Persons	Max: 12

## Petrol Engines

2 x Volvo Penta 5.7 GXI  
DPS Duoprop (inc prop) 239kw/320hp

or

2 x Mercruisers 350 mag DTS  
BEIII (inc electric shift) 224kw/300hp  
**AXIUS as option**

## Diesel Engines

2 x Volvo Penta D4-300 EVC  
DPS Duoprop (inc prop) 220kw/300hp

or

2 x Volvo Penta D6-330 EVC  
DPH Duoprop (inc prop) 237kw-322hp



*External Pictures*



*Internal Pictures*



# Standard Specification

## Hull

Hull windows to open

## Steering Wheel

Steering wheel in carbon design, height adjustable

## Bow

Delta anchor zinc coated

Stainless steel bow fitting with anchor roller

Anchor chain, zinc coated 0.8mm, 50 metres

Electric windlass

## Deck

GRP hardtop with electric sunroof (only HT)

GRP radar arch (only Sport)

Roof Lights

Anchor box, self-drained

6 Stainless steel cleats

Stainless steel bow rail

Stainless steel handhold and handrail on radar arch (only Sport)

Stainless steel handrail and handrail on hard top (only HT)

## Bathing Platform

Teak on bathing platform

Bathing platform with bathing ladder (telescopic)

Stern shower, cold and warm water (prepared)

## Cockpit

Wet bar with sink

Cockpit, self drained

Cockpit light integrated in radar arch or hardtop

Windscreen wiper

Windscreen (security glass)

Illuminated compass

Helm stand with single seat

Settee and sun pad with upholstery in quality white

Marine quality cockpit upholstery, white

Cockpit table GRP

Cabin sliding door, tinted glass

## Cabins

Two single berths, convertible to double berth

## Cabin

Reading lamp

Mahogany interior, massive and veneer

U-shaped settee

Standard upholstery

## Stowage space

Locker and racks

Stowage space

Stowage space under sitting area

Stowage under aft sun pad

Overhead locker and wardrobe

## Galley

Cutlery drawer

2 flame alcohol and electric burner

Refrigerator 12v, 80 litres

Stainless steel sink with cover

## Miscellaneous

CE fire extinguishing system

2 fire extinguisher

Fire blanket

Transportation cover

Ventilation flaps for transportation cover (winter storage)

Electrical engine bay cover

Engine bay fan

CE Category B

CE Certification

## Water supply

Electrical pressurized water pump with filter

## Toilet

Pump toilet with holding tank, disposal via seacock and deck suction

## Bilge Pump

Electrical bilge pump in aft cabin

## Instrumentation

Analogue instrumentation, speed, depth, engine temp., engine counter, power trim, voltmeter, rev metre, multi functional display

## Electrical system

AC outlet package (1 per cabin and 2 in galley)

Shore supply 230v

Starter battery 88ah, 135ah depending on motorization (1 x per engine)

Additional battery 135ah

Main switch for batteries

## Navigation

Navigation lights (BDI)

Horn

### Special Edition HIGHLINE Avantgarde

The version "Highline" lets you choose among four different colours for the interior upholstery while cockpit upholstery is always white and hull stripe is blue.

The version "Highline Avantgarde" offers the additional wood colours walnut and light oak beside mahogany and several colours for the cockpit upholstery and matching decoration stripes on the hull to select from

At the time "Highline Avantgarde" version has four optional fabrics for the interior fabrics for the interior upholstery available

# *Individual Options*

## **Bow Thruster**

Bow thrusters SE80, electric (only in combination with 2<sup>nd</sup> service battery)

## **Deck**

Teak on side deck

## **On Deck**

Cup holder, stainless steel in foredeck

Sun upholstery (only in combination with cup holder, stainless steel in foredeck)

Camper cover

In harbour cover

## **Cockpit**

Cockpit grille 230v

Teak on cockpit floor

Teak cockpit table

Cockpit upholstery cream

Refrigerator in cockpit 12v

## **Head**

Shower in head with shower room separation

## **Cabin**

Furniture in real wood and veneer light oak

Furniture in real wood and veneer walnut

Carpet in cabin

Interior upholstery in Melange (harmonizing with wood colour)

## **Pantry**

Microwave

## **Miscellaneous**

Steel cradle for over sea transport

Hot air heating 3.5kw for diesel (not possible in combination with air-conditioning/heating unit.

Air condition/heating unit

## **Warm water**

Warm water boiler 20ltrs engine cooling circuit & via 230v shore supply

## **Toilet**

Electric sea toilet with holding tank, disposal via seacock & deck suction

## **Engine**

Axius drive for Mercruiser

EVC electronic shift for double engines/only for Volvo Penta, standard for D4 and D6

Electrical trim flaps

## **Electrical System**

2<sup>nd</sup> additional battery 135ah

Battery charger, 45A (3 channel)

Gasoline generator 230v(4.5kw) or 110v (3.8kw)

Diesel generator 230v (4.5kw) or 110v (3.8kw)

## **Multimedia**

TV 19" in salon with DVD

TV cabling inc. antenna and outlets

Radio with CD/MP3 player and 2 speaker in salon

2 speaker in cockpit

## **Navigation**

VHF cabling inc. Antenna

Raymarine autopilot

Chart Plotter Raymarine C80 with GPS

Raymarine ST60 Tridata

Raymarine Radar

## **These are just a selection**

**Please contact us for full optional list, delivery and commissioning costs**

**Tel: 01803 853843**

**Email: [sales@plainsailing.co.uk](mailto:sales@plainsailing.co.uk)**